

NE > < US

CAD Short Courses

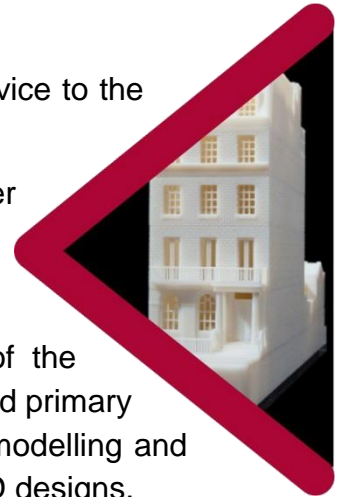
Introduction

Nexus offer a range of courses to enable you to develop your CAD skill, from a beginner's guide through to advanced CAD CAM.

Beginners Guide To CAD

- Description:** A beginner's guide to CAD that introduces the novice to the basics of 2D and 3D CAD.
- Duration:** 6 Weeks – 1 evening per week of 3 hours per lesson.
- Price:** £200
- Content:** Program setup, orientation and familiarisation of the user interfaces. Introduction to common syntax and primary tools. Entry level tutorials leading to basic solid modelling and problem solving. Conversion of 2D drawings to 3D designs.

Entry Requirements: None



Solidworks Fundamentals

Description: A course designed to provide a solid understanding of the basic operation of Solidworks resulting in the achievement of the CSWA certificate.

Solidworks is one of the most commonly used mechanical CAD packages in industry. Although this course is targeted at beginners, learners can progress at their own pace towards gaining an industry recognised Certificate in SolidWorks Achievement.

Duration: 12 Weeks – 1 evening per week of 3 hours per lesson

Price: £500 (£450 for students who have previously attended the Beginners guide to CAD)

Content: Progressive combination of tutor led exercises and tutorials building on the key strengths required to pass the CSWA exam including; Further tool, syntax and function familiarisation, part and assembly modelling, solution approach and error correction.

Learners are provided with a 12 month Solidworks licence so that they can work on drawings away from Nexus.



NE > < US

Entry Requirements: A basic understanding of CAD, IT familiarity

How To Book

Please call, email or visit us to discuss your requirements.

To enrol, please complete the enrolment form which can be sent to you via email or collected at the office.

How To Pay

Payment is accepted via BACS or Cheque.

Date Of Next Course

Beginners Guide To CAD

Tuesday 24th October 2017 for 6 weeks

Solidworks Fundamentals

Thursday 14th September 2017 for 12 Weeks



Location

All courses take place at Nexus, on the Beacon Park estate, Gorleston

